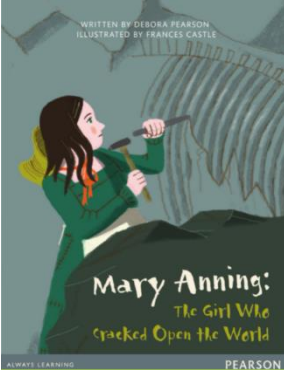
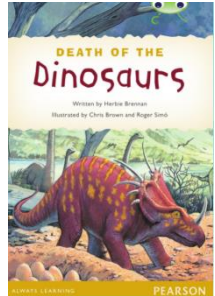
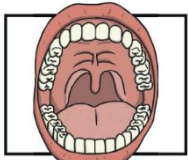


Year 4 Reading Curriculum

Autumn 1

	<p>Genre: Biography through narrative</p> <p>National Curriculum references</p> <p>Check the text makes sense to them and discuss understanding</p> <p>Ask questions to aid understanding</p> <p>Draw inferences such as characters thoughts feeling etc and justify with evidence</p> <p>Make predictions based on what has been read</p> <p>Identify main ideas from more than one paragraph and summarise</p> <p>Identify how language contributes to meaning</p> <p>Retrieve and record information from non-fiction texts</p> <p>Participate in discussions about books.</p>							
	Word in context	Retrieve information	Summarise	Make inferences	Predict	Make connections	Choice of language	Make comparisons
Week 1	✓	✓	✓	✓	✓	✓	✓	✓
Week 2	✓	✓	✓	✓	✓	✓	✓	✓
Week 3	✓	✓	✓	✓		✓		✓
	<p>Genre: Non-fiction</p> <p>National Curriculum references</p> <p>Check the text makes sense to them and discuss understanding</p> <p>Ask questions to aid understanding</p> <p>Make predictions based on what has been read</p> <p>Identify main ideas from more than one paragraph and summarise</p> <p>Identify how language contributes to meaning</p> <p>Retrieve information from non-fiction texts</p> <p>Participate in discussions about books.</p>							
	Word in context	Retrieve information	Summarise	Make inferences	Predict	Make connections	Choice of language	Make comparisons
Week 4	✓	✓	✓	✓	✓	✓	✓	
Week 5	✓	✓	✓	✓		✓	✓	

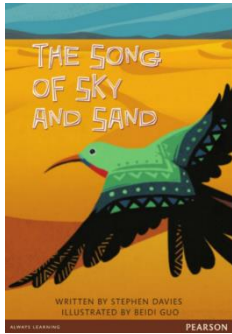


Teeth

Genre: Non-fiction (assessment style. Text available in the J:drive)

	Word in context	Retrieve information	Summarise	Make inferences	Predict	Make connections	Choice of language	Make comparisons
Week 6	✓	✓		✓		✓		

Autumn 2



Genre: Fiction

National Curriculum references

Check the text makes sense to them and discuss understanding

Ask questions to aid understanding

Draw inferences such as characters thoughts feeling etc and justify with evidence

Make predictions based on what has been read

Identify main ideas from more than one paragraph and summarise

Identify how language contributes to meaning

Participate in discussions about books.

	Word in context	Retrieve information	Summarise	Make inferences	Predict	Make connections	Choice of language	Make comparisons
Week 1	✓		✓	✓	✓	✓	✓	
Week 2	✓		✓	✓	✓	✓	✓	
Week 3	✓		✓	✓	✓	✓		
Week 4	✓		✓	✓	✓	✓	✓	
Week 5	✓		✓	✓	✓	✓	✓	

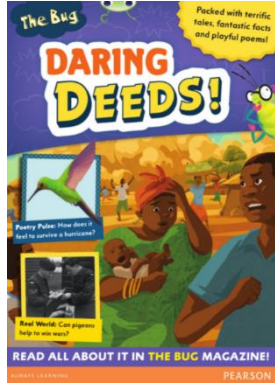


A Real Virtual World

Genre: Fiction (assessment style. Text available in the J:drive)

	Word in context	Retrieve information	Summarise	Make inferences	Predict	Make connections	Choice of language	Make comparisons
Week 6	✓	✓	✓	✓	✓			✓

Spring 1



Genre: Non-fiction, fiction and poetry

National Curriculum references

The Mystery of the Red Moon. Hummingbird. Race to the Pole. Leaving Home.

Check the text makes sense to them and discuss understanding

Ask questions to aid understanding

Retrieve and record information from non-fiction

Draw inferences such as characters thoughts feeling etc and justify with evidence

Make predictions based on what has been read

Identify main ideas from more than one paragraph and summarise

Identify how language contributes to meaning

Participate in discussions about books.

	Word in context	Retrieve information	Summarise	Make inferences	Predict	Make connections	Choice of language	Make comparisons
Week 1	✓		✓	✓	✓	✓		
Week 2	✓		✓	✓	✓	✓	✓	
Week 3	✓		✓	✓	✓	✓	✓	
Week 4	✓	✓	✓	✓		✓		✓
Week 5	✓		✓	✓		✓		

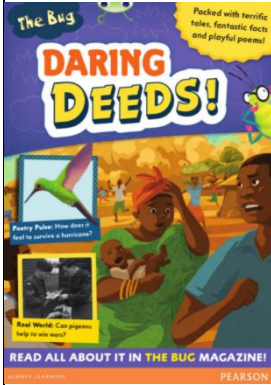
Genre: Poetry (assessment style. Text available in the J:drive)



It Couldn't Be Done

	Word in context	Retrieve information	Summarise	Make inferences	Predict	Make connections	Choice of language	Make comparisons
Week 6	✓	✓		✓			✓	✓

Spring 2



Genre: Non-fiction and Fiction.

Pigeons Rule the Roost. Nanuck's Tale. The Secret in the Attic.

National Curriculum references

Check the text makes sense to them and discuss understanding

Ask questions to aid understanding

Retrieve and record information from non-fiction

Draw inferences such as characters thoughts feeling etc and justify with evidence

Make predictions based on what has been read

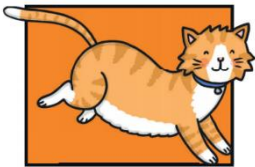
Identify main ideas from more than one paragraph and summarise

Identify how language contributes to meaning

Participate in discussions about books.

	Word in context	Retrieve information	Summarise	Make inferences	Predict	Make connections	Choice of language	Make comparisons
Week 1	✓	✓	✓	✓		✓		✓
Week 2	✓		✓		✓	✓		
Week 3	✓		✓	✓		✓	✓	
Week 4	✓		✓	✓	✓	✓	✓	✓
Week 5	✓		✓	✓		✓	✓	

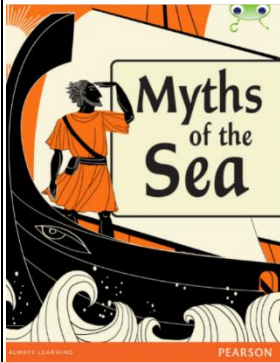
Genre: Non-fiction (assessment style. Text available in the J:drive)



Cats

	Word in context	Retrieve information	Summarise	Make inferences	Predict	Make connections	Choice of language	Make comparisons
Week 6	✓	✓		✓		✓		

Summer 1



Genre: Fiction and Non-fiction
Sean and the Sea-Maiden. Odysseus and the Monster. Real Sea Monsters.
National Curriculum references
 Check the text makes sense to them and discuss understanding
 Ask questions to aid understanding
 Draw inferences such as characters thoughts feeling etc and justify with evidence
 Make predictions based on what has been read
 Identify main ideas from more than one paragraph and summarise
 Identify how language contributes to meaning
 Retrieve and record information from non-fiction texts

Participate in discussions about books.

	Word in context	Retrieve information	Summarise	Make inferences	Predict	Make connections	Choice of language	Make comparisons
Week 1	✓		✓	✓		✓	✓	✓
Week 2	✓		✓	✓	✓	✓		
Week 3	✓		✓	✓	✓	✓	✓	✓
Week 4	✓		✓	✓	✓	✓		
Week 5	✓	✓	✓	✓		✓	✓	✓

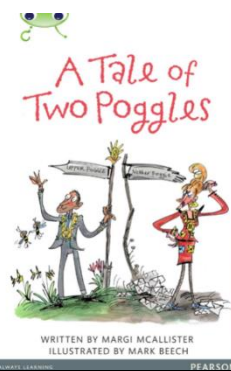


A Little Princess

Genre: Fiction (assessment style. Text available in the J:drive)

	Word in context	Retrieve information	Summarise	Make inferences	Predict	Make connections	Choice of language	Make comparisons
Week 6	✓	✓		✓		✓		✓

Summer 2



Genre: Fiction

National Curriculum references

Check the text makes sense to them and discuss understanding

Ask questions to aid understanding

Draw inferences such as characters thoughts feeling etc and justify with evidence

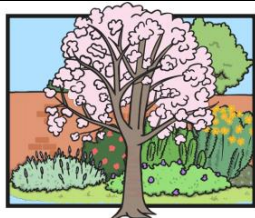
Make predictions based on what has been read

Identify main ideas from more than one paragraph and summarise

Identify how language contributes to meaning

Participate in discussions about books.

	Word in context	Retrieve information	Summarise	Make inferences	Predict	Make connections	Choice of language	Make comparisons
Week 1	✓		✓	✓	✓	✓		
Week 2	✓		✓	✓	✓	✓	✓	
Week 3	✓		✓	✓		✓		
Week 4	✓		✓	✓	✓	✓		
Week 5	✓		✓	✓	✓	✓		✓



Foreign Lands

Genre: Poetry (assessment style. Text available in the J:drive)

	Word in context	Retrieve information	Summarise	Make inferences	Predict	Make connections	Choice of language	Make comparisons
Week 6	✓	✓		✓			✓	